

North Carolina Helene Recovery

Jan. 24, 2025

Key Messages

One-day Agriculture Recovery Centers are planned to help North Carolina farmers recover from Helene damage. The first are set for Buncombe, Henderson, McDowell and Watauga counties. Additional events are planned for Ashe, Avery, Burke, Mitchell and Yancey counties. All are open 9 a.m. to 6 p.m. For event locations and to learn more about what these centers will offer visit



FEMA Video: [North Carolinian Christmas Tree Grower is Planting the Seeds of Recovery](#)

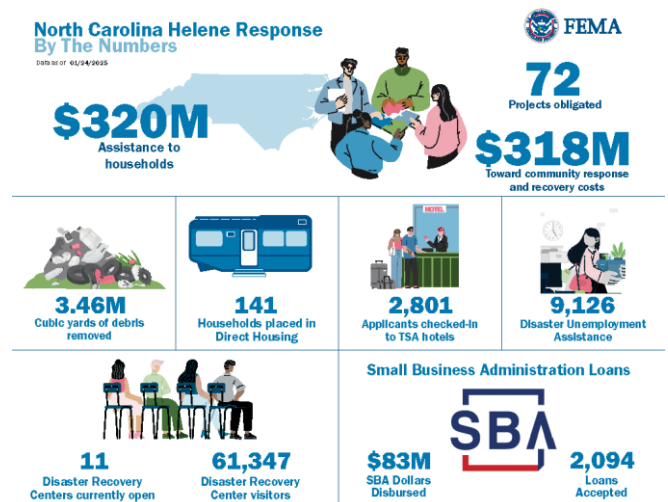
[FEMA, State, USDA Team to Host Agriculture Recovery Fairs | FEMA.gov](#) – <https://www.fema.gov/press-release/20250123/fema-state-usda-team-host-agriculture-recovery-fairs>

Keep your recovery on track. Survivors who still need assistance with their recovery should stay in touch with FEMA to provide regular updates on their housing status and update contact information, so their recovery process is not delayed. Anyone who has received a notification and still needs housing assistance, should call the helpline at 800-621-FEMA (3362) or visit a Disaster Recovery Center. No appointment is needed. To find those center locations, go to [fema.gov/drc](https://www.fema.gov/drc) or text “DRC” and a ZIP code to 43362.

Emergency sheltering programs and disaster case management are available to any survivor who needs additional assistance. NC Disaster Case Management is available for survivors. They can visit ncdps.gov/helene/dcm or call 844-746-2326.

By the Numbers

- **\$320 million approved to 146,000+ households and individuals** beginning their recovery. That includes money to help rent a home or apartment as survivors begin their recovery.
- **\$318 million in Public Assistance funding approved** to support community recovery.
- **The U.S. Small Business Administration is still accepting low-interest loan applications.** To date more than 15,597 loan applications have been received, with



FEMA

3,019 approved for more than \$232 million. Of that, **\$83 million** in low-interest disaster loans have been paid directly to North Carolina survivors.

- FEMA is providing **multiple temporary housing options to meet North Carolinians' individual needs**. The first step to receiving housing assistance is applying with FEMA.
 - More than **2,801 households** are using **Transitional Sheltering Assistance hotels and motels**.
 - **141 households** have been placed in temporary housing units provided by FEMA Direct Temporary Housing Assistance.
 - FEMA has contracted with 17 commercial parks to be able to place units and the agency is working with 8 other parks for potential contracting purposes.
- FEMA has awarded more than **\$11.9 million** for repair or replacement of roads and bridges to 4,400+ families.
- More than **3.46 million cubic yards** of debris has been removed from public rights of way by FEMA and the U.S. Army Corps of Engineers and contractors.
- More than **\$49.6 million** in federal unemployment benefits have been provided to 9,000+ survivors. For more information, call the unemployment assistance hotline at 919-629-3857 (for Spanish call 919-276-5698).

Applied for FEMA Assistance? Read Your FEMA Letter Carefully

- If you applied for disaster assistance with FEMA, you will receive a letter explaining your application status. If you are not currently approved for assistance, you may need to send additional documentation to FEMA. You can easily upload documents to [Disasterassistance.gov](https://www.fema.gov/disaster/assistance) or submit them at a Disaster Recovery Center.

Crisis Counseling, Mental Health Resources Available for Helene Survivors

- The North Carolina Department of Health and Human Services' Hope4NC Crisis Counseling Program provides immediate support and crisis counseling services for North Carolinians following Helene. Survivors experiencing stress, emotional fatigue, a mental health crisis or just need someone to talk to, can call the Hope4NC Helpline 24/7 at 855-587-3463. Services are free and available to anyone in the declared 39 North Carolina counties and tribal members of the Eastern Band of Cherokee Indians.